

MISSOURI RIVER RECOVERY PROGRAM ADAPTIVE MANAGEMENT GOVERNANCE AND THE COLLABORATIVE PROCESS

Mary S. Roth, PE, PMP
Special Assistant for Missouri River Programs
Northwestern Division
US Army Corps of Engineers



National Conference on Ecosystem Restoration

Building connections from the local to the landscape scale

Session 11
28 August 2018

"The views, opinions and findings contained in this report are those of the authors(s) and should not be construed as an official Department of the Army position, policy or decision, unless so designated by other official documentation."



US Army Corps
of Engineers®

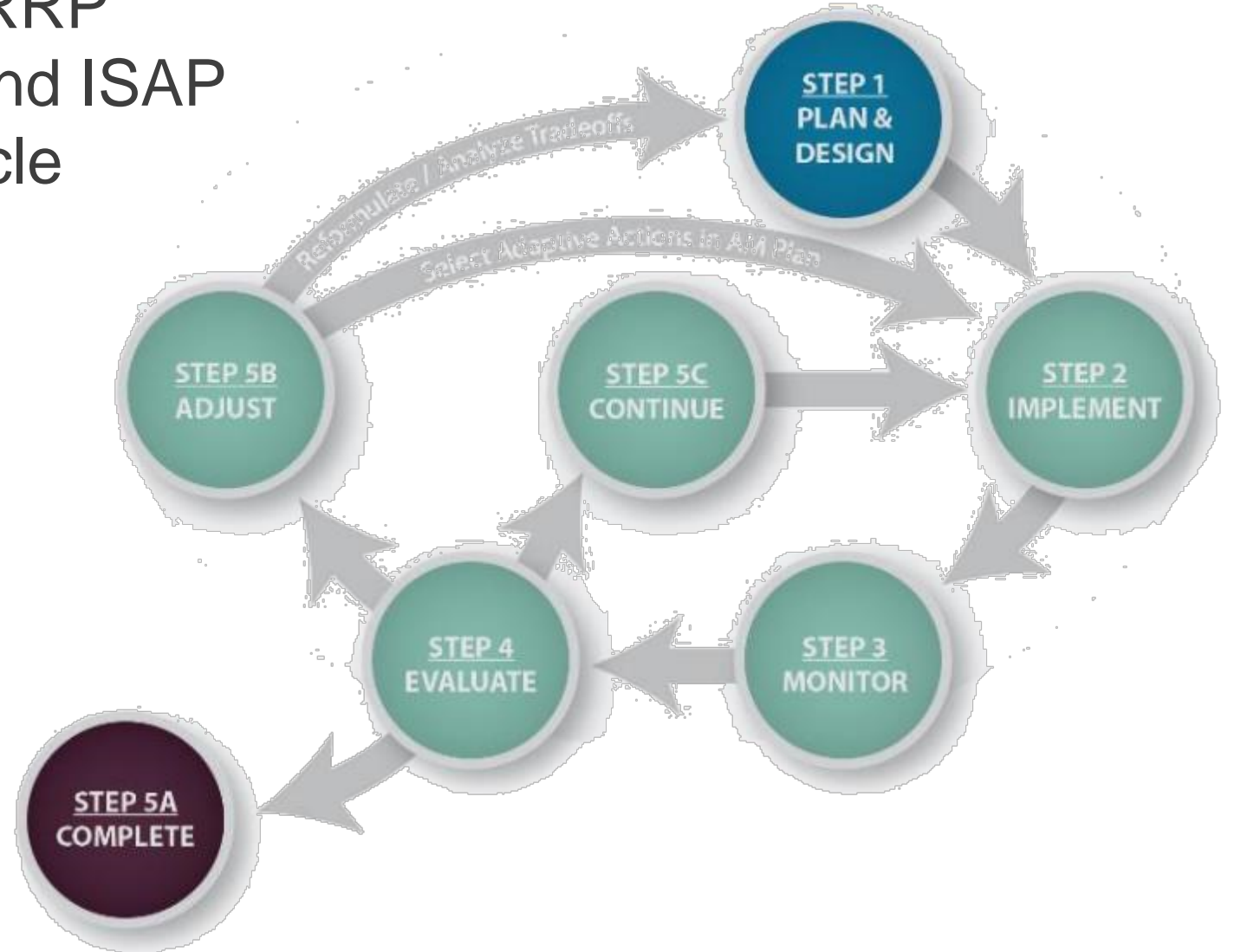




PRESENTATION OUTLINE



- Governance Structure in MRRP
- MRRIC and Work Groups and ISAP
- Annual AM Governance Cycle
- Conflict Resolution





GOVERNANCE

The approach for converting knowledge into improved decisions



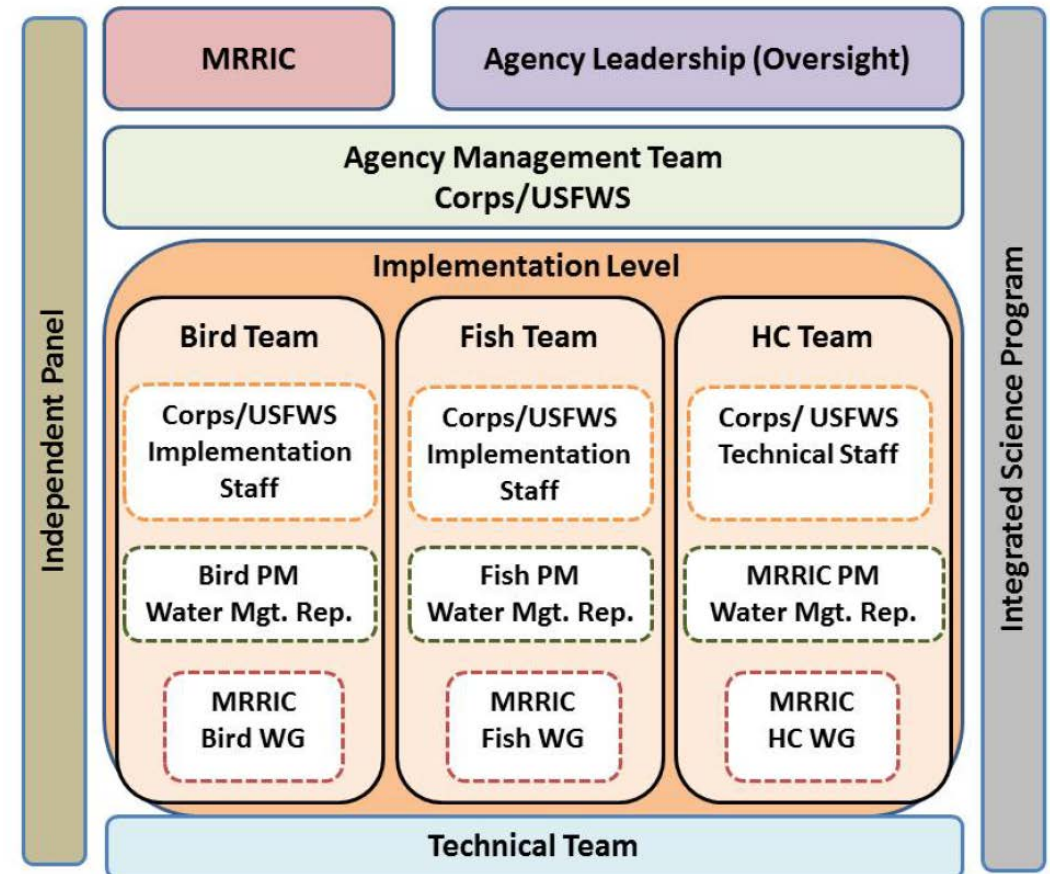
MRRP SAMP Governance Describes:

- WHAT decisions need to be made
- WHO is involved in the decision process
- HOW are decisions made
- WHEN are decisions required

Effective Systems of Governance Contribute to:

- Trust-Building
- Knowledge Generation
- Collaborative Learning
- Understanding of Interests
- Conflict Resolution

Governance Structure of MRRP AM





MRRIC



MEMBERSHIP

29 Stakeholders

- 2 Agriculture
- 1 Conservation Dist
- 2 Environ/Cons Orgs
- 2 Fish & Wildlife
- 2 Flood Control
- 2 Hydropower
- 2 Irrigation
- 2 Local Government

- 1 Major Tributaries
- 2 Navigation
- 2 Recreation
- 1 Thermal Power
- 2 Water Quality
- 2 Water Supply
- 2 Waterway Industries
- 2 At Large

15 Federal Agencies

- Bureau of Indian Affairs
- Bureau of Land Mgmt
- Bureau of Reclamation
- EPA
- Fed Highway Admin
- Maritime Admin
- National Park Service
- NWS / NOAA
- USACE
- USDA Forest Service
- USDA NRCS
- USFWS
- U.S. Geological Survey
- U.S. Coast Guard
- WAPA

21 Tribes

- Blackfeet
- Cheyenne River Sioux
- Chippewa-Cree Indians
- Crow Creek Sioux
- Crow Nation
- Eastern Shoshone
- Flandreau Santee Sioux
- Fort Belknap
- Fort Peck
- Iowa Tribe of Kansas & Nebraska
- Kickapoo of Kansas
- Lower Brule
- Northern Arapaho
- Northern Cheyenne
- Oglala Sioux Pine Ridge
- Omaha of Nebraska
- Osage Nation
- Ponca of Nebraska
- Prairie Band of Potawatomi of Kansas
- Rosebud Sioux
- Sac and Fox Nation
- Santee Sioux
- Sisseton-Wahpeton
- Oyate of Lake Traverse
- Spirit Lake Sioux
- Standing Rock Sioux
- Three Affiliated Tribes
- Turtle Mountain Chippewa
- Winnebago of Nebraska
- Yankton Sioux

8 States

- Iowa
- Kansas
- Missouri
- Montana
- Nebraska
- North Dakota
- South Dakota
- Wyoming



MRRIC STRUCTURE



Lead Agencies

- USACE
- USFWS

AM Work Groups

- Bird
- Fish
- Human Considerations
- AM Governance Planning

MRRIC Support

- Facilitation & Consensus Building Team
 - US Institute for Environmental Conflict Resolution, Tucson AZ
 - RESOLVE, Washington DC
- MRRIC Chair
- Vice Chair

Independent Science Advisory Panel (ISAP)

- Science
- Socio-Economics



MRRIC Decision Making

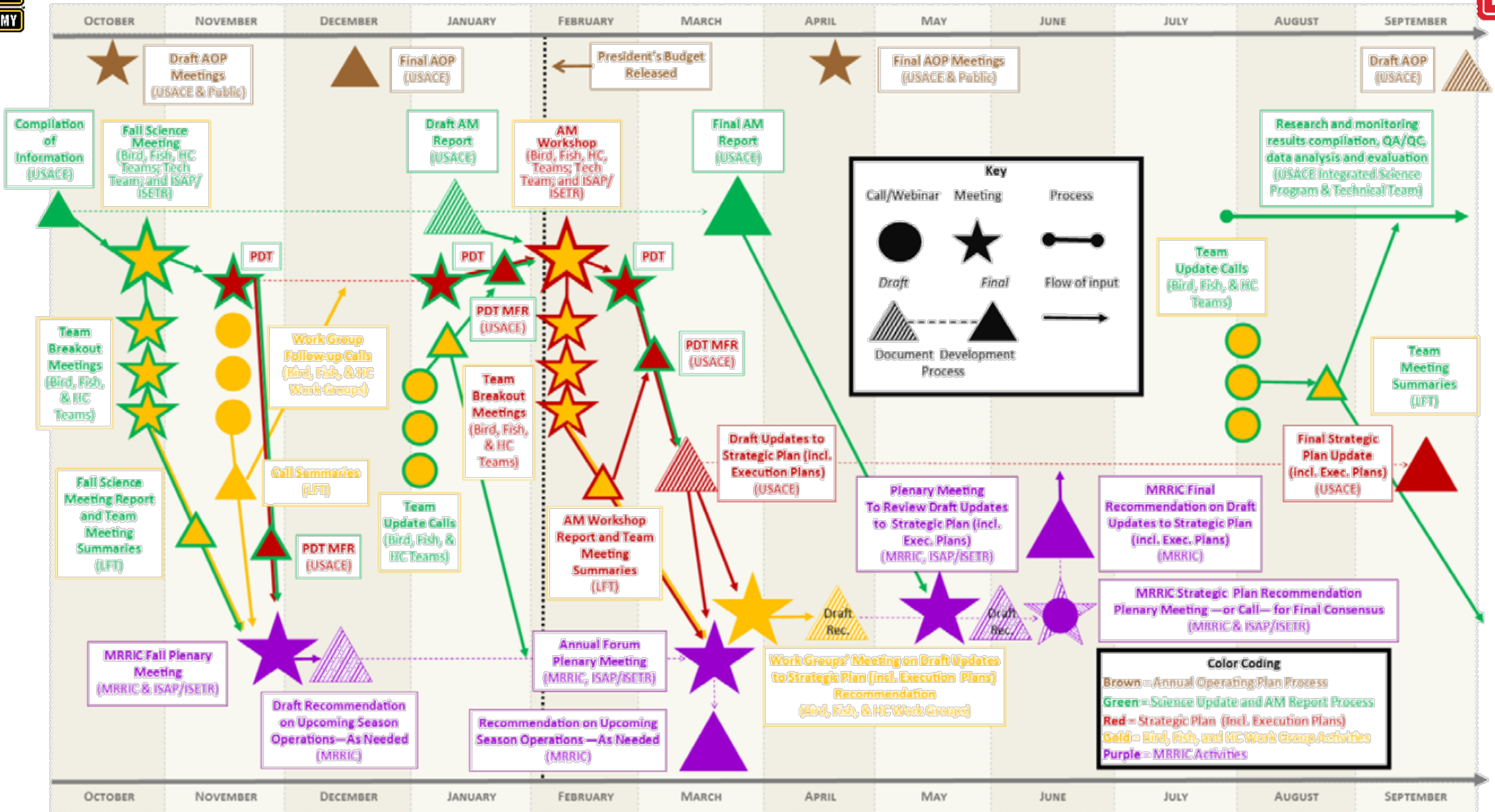
- Consensus
- Recommendations





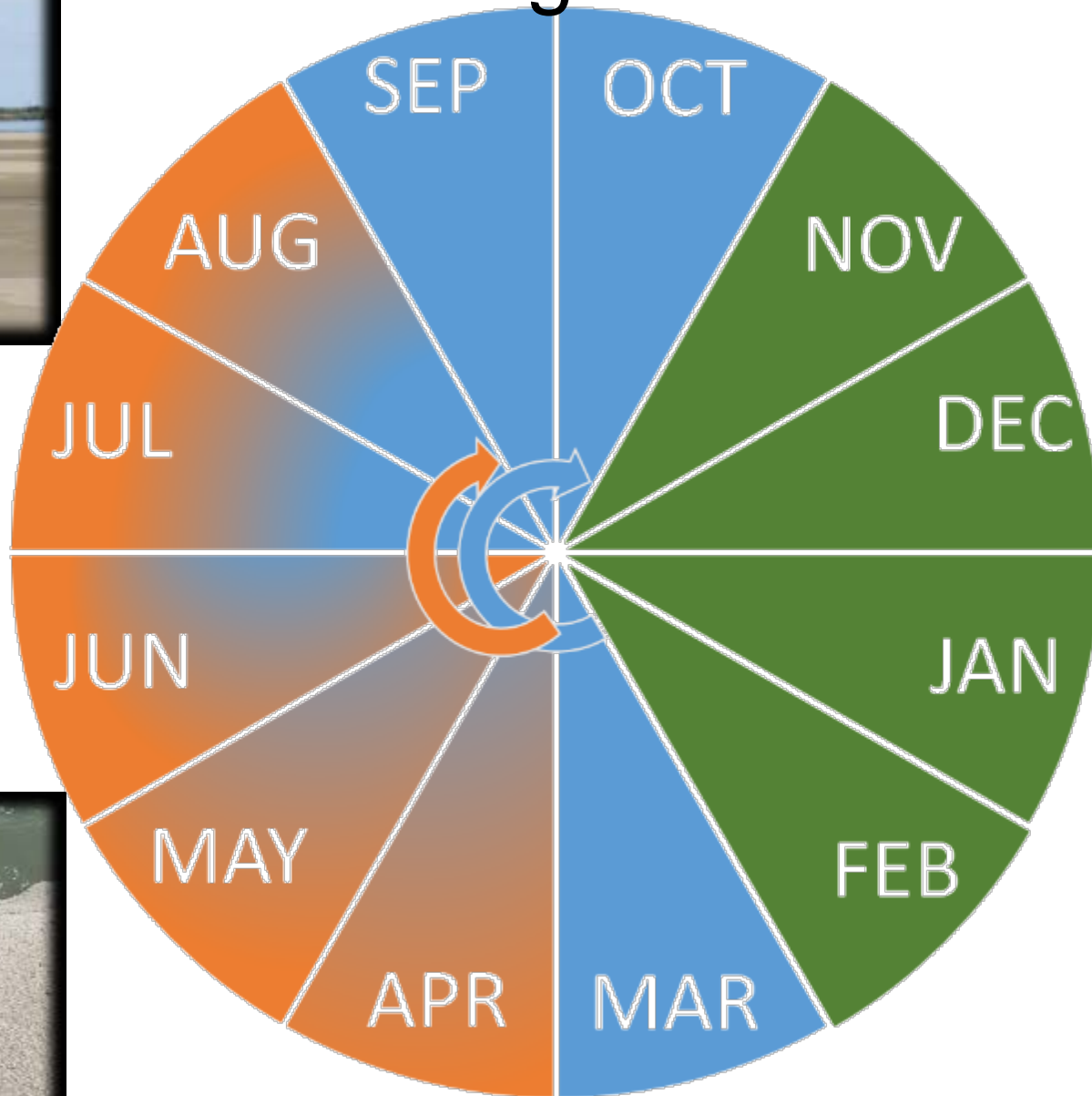
MISSOURI RIVER ADAPTIVE MANAGEMENT ANNUAL GOVERNANCE ACTIVITIES GENERIC® PROCESS MAP

Draft for SAMP V7



This process map depicts the proposed governance activities to be undertaken annually by the U.S. Army Corps of Engineers (USACE), the U.S. Fish and Wildlife Service (USFWS), and the Missouri River Recovery Implementation Committee (MRRIC) in the implementation of Adaptive Management (AM) related to the endangered piping plover and pallid sturgeon in the Missouri River. *Adjustments to the timing and details of specific activities may shift from year to year.

Monitoring Activities



BIRDS: APR - AUG

FISH: MAR - OCT



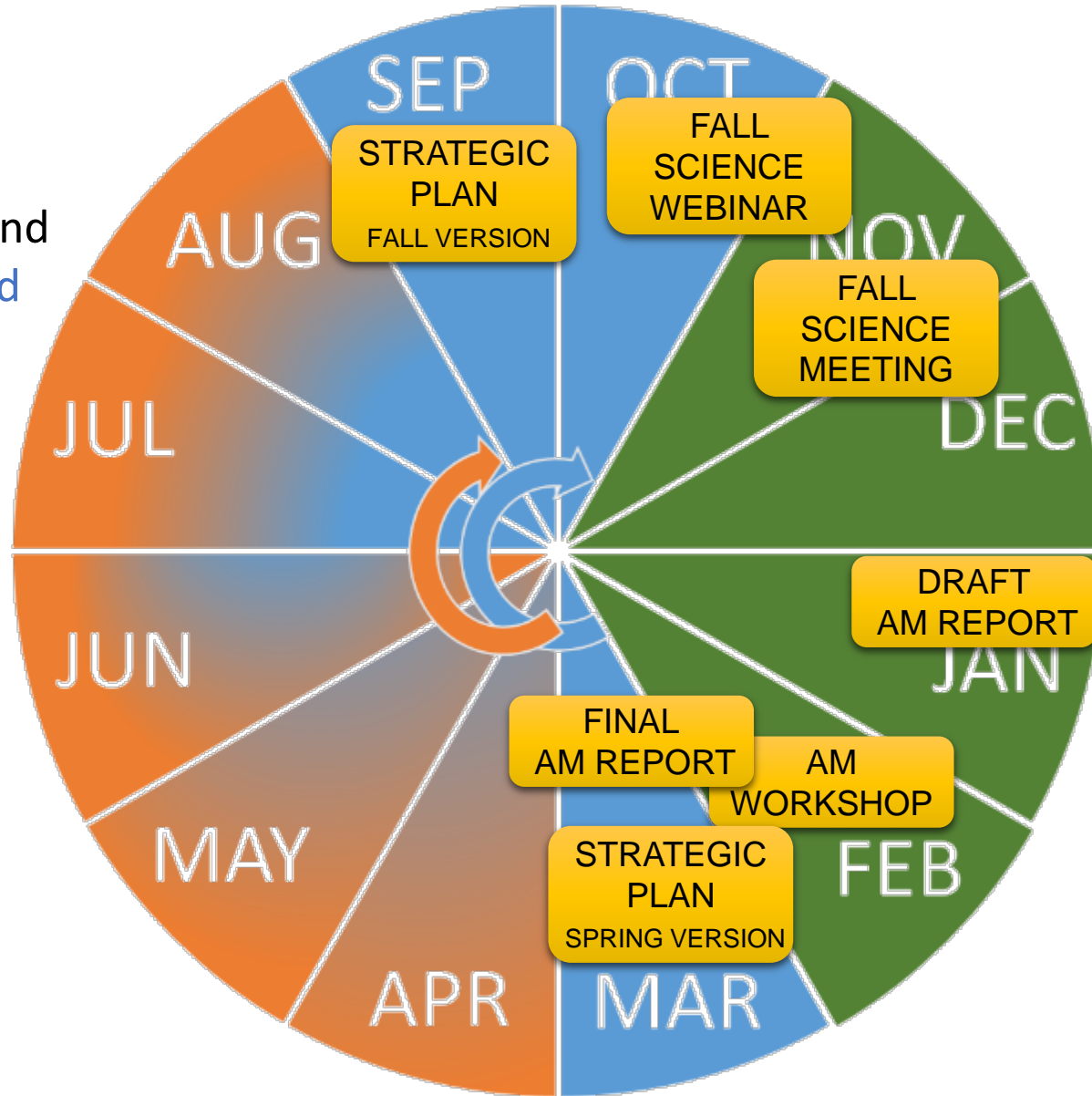
AM Processes

Strategic Plan

- 5-year Rolling Plan for Program Implementation
- Science+Policy+Values
- Lays Out Future Actions and Priorities → Looks Forward
- Contingencies & Risk Management
- Fall / Spring versions

AM Workshop

- Discuss Program
 - Performance
 - Projections
 - Needs
 - Strategic Direction
 - Risks
- Adjustments
- Recommendations
- Summaries



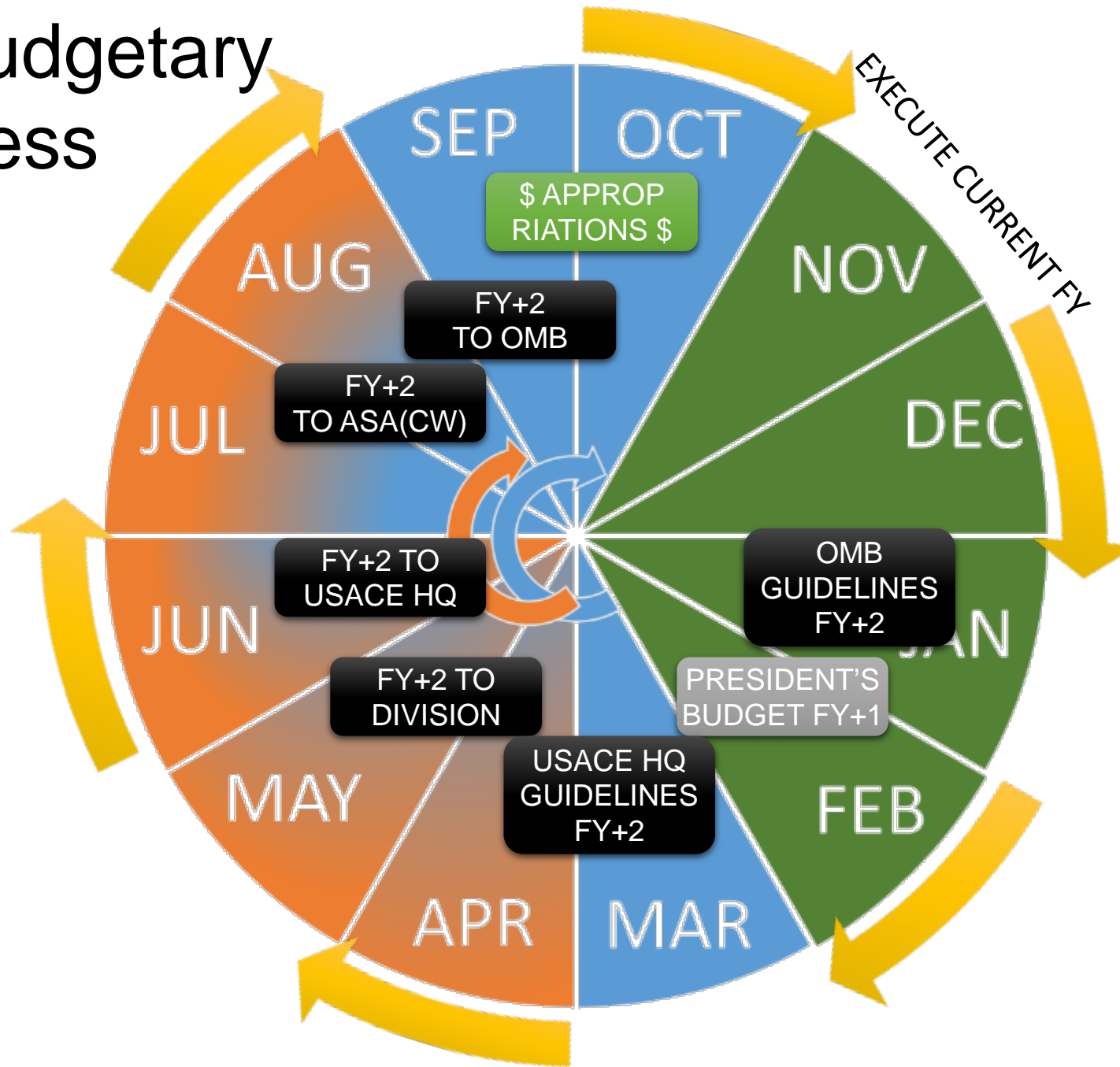
Fall Science Webinar/Meeting

- Review Initial Observations from Field Season
- Assess Ongoing Research Efforts
- Identify Analytical Needs
- Webinars for Tech Presentations
- Face-to-Face Meeting with Tech Staff
- Presentations, Abstracts, Meeting Summary

Annual AM Report

- Science-Based
- Results ← Looks Back
 - Research
 - Monitoring
 - Management Actions
- Key Issues
- Draft / Final Versions
- BiOp Compliance Document

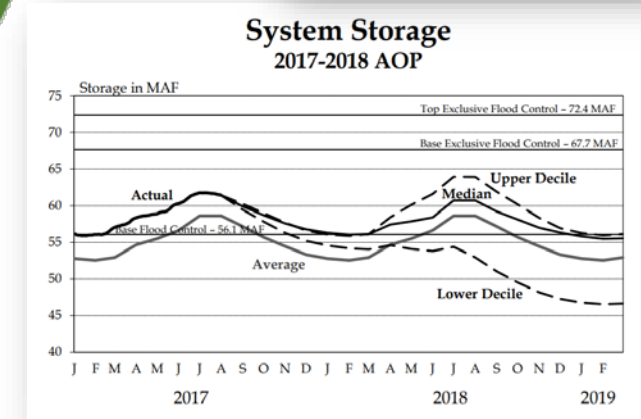
Federal Budgetary Process



NOT SHOWN:

- MRRIC Work Group Engagements
 - Bird
 - Fish
 - Human Considerations
 - AM Governance
- Site-Specific Public Engagements
- Tribal Engagements
 - Government-to-Government
 - Sect 106
- Water Management
 - Bird Operations Coord
 - Monthly Outreach
- PDT Meetings
- In-Progress Reviews
- Agency Coord Meetings
- Tech Team, Management Team, Oversight, etc, Meetings

MRRIC and AOP Engagements



MRRP AM Annual Cycle





CONFLICT RESOLUTION



- Disputes are likely
- Commitment to resolution is required by all
- Approach depends on
 - Nature of the conflict (science or policy)
 - Parties involved
 - Beyond the scope of the AM Governance Process
 - USACE internal processes
 - MRRIC internal processes
 - ESA compliance objectives, targets, metrics
 - Recommended changes can be initiated by
 - Agencies
 - MRRIC
 - ISAP
 - Others
- Be clear on ultimate decision maker



SUMMARY

Questions you may have:

- Could It Be Any More Complicated?
- Will the Governance Process Work?
- Is it Sustainable?



US Army Corps
of Engineers®



US Army Corps
of Engineers®
Engineer Research and
Development Center

ERDC/EL TR-18-DRAFT

Environmental Laboratory

Science and Adaptive Management Plan

Missouri River Recovery Program

Draft/Pre-decisional/For Review and Comment

May 2018



Draft Document for Review